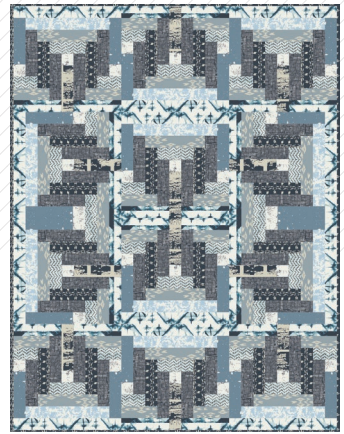


INWARD

april rhodes

QUILT DESIGNED BY AGF

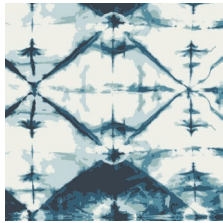


COLOR OPTION

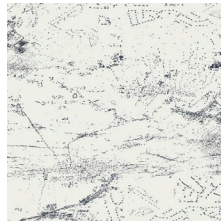
OBSERVER

FABRICS DESIGNED BY APRIL RHODES

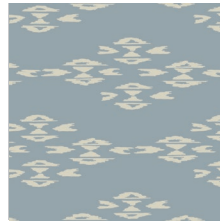
SHARD



OBR-49800
INDIGO WINDOW CRYSTAL



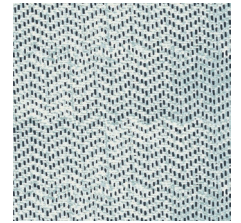
OBR-49801
AERIAL VIEW WHISPER



OBR-49802
OVERSHOT HAZE



OBR-49803
TRIANGLE TOKENS INK



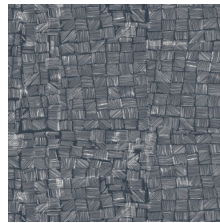
OBR-49804
TREADLE TRADITION



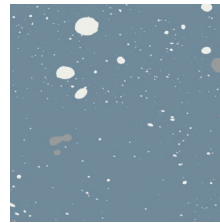
OBR-49805
HOMESPUN PRAXIS



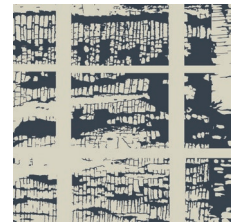
OBR-49806
STONE WASH CLOUDY



OBR-49807
MESH WITH ME MOM

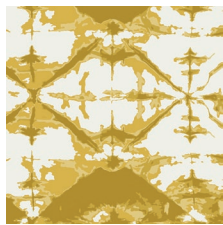


OBR-49808
SPECK STARDUST

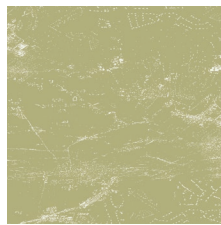


OBR-49809
CHIPPING AWAY DEPTH

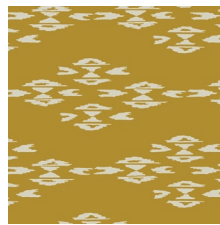
PARTICLE



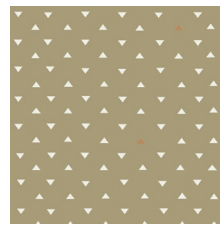
OBR-59800
INDIGO WINDOW SULPHUR



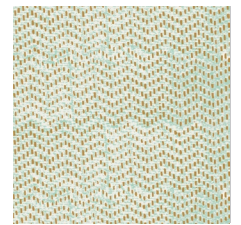
OBR-59801
AERIAL VIEW SAGE



OBR-59802
OVERSHOT GOLD



OBR-59803
TRIANGLE TOKENS HOME



OBR-59804
TREADLE LACE



OBR-59805
HOMESPUN WILLOW



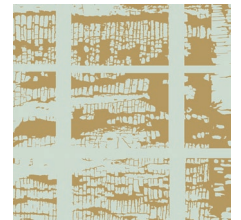
OBR-59806
STONE WASH GLAZE



OBR-59807
MESH WITH ME OLIVE



OBR-59808
SPECK BRONZE



OBR-59809
CHIPPING AWAY MICA



- Then sew another set of pieces that will go on the sides of the previous sewn set.
- Take one 3' x 9¼' strip from fabric **F**, one 3' x 6¾' strip from fabric **E**, one 3' x 4¼' strip from fabric **B**, one 3' square from fabric **H**, one 3' x 5½' from fabric **G**, one 3' square from fabric **D** and one 3' x 5½' strip from fabric **D**.
- Sew the 3' square from fabric **H** to the shortest edge of 3' x 4¼' strip from fabric **B**.



DIAGRAM 4

- Attach the 3' x 6¾' strip from fabric **E** to the left edge of piece **HB**.



DIAGRAM 5

- Attach the 3' x 5½' strip from fabric **G** to the bottom edge of piece **HBE**.



DIAGRAM 6

- Attach the 3' x 5½' strip from fabric **D** to the bottom edge of piece **HBEG**.



DIAGRAM 7

- Sew the 3' square from fabric **D** to the shortest edge of 3' x 9¼' strip from fabric **F**.



DIAGRAM 8

- Attach the **DF** piece to the **HBEGD** set.
- Set aside.

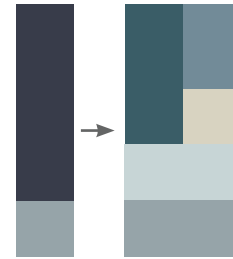


DIAGRAM 9

- Then sew the same set of pieces but reflecting the previous piece as show in the diagram below.



DIAGRAM 10

- Take the three sets of patchwork and attach them together in the following order.
- Set aside.

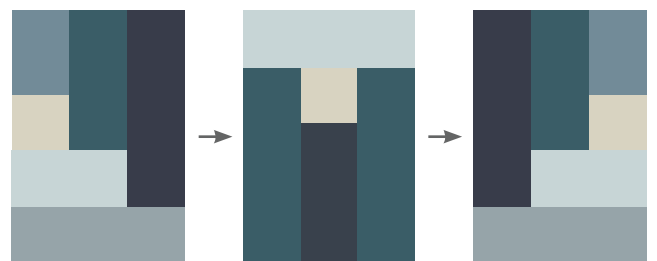


DIAGRAM 11

- Take one 3' x 3¾' strip from fabric **I** and two 3¾' x 10½' strips from fabric **A**.
- You will end with a 23' strip.



DIAGRAM 12

- Attach the **IAI** strip to the bottom of the piece you started with.
- Set aside.

