

X
X
X
X
X
X
X
X
X
X
X
X
X
X
X
X

Shadow



FREE PATTERN

X X





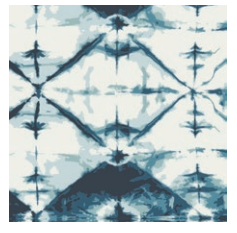
Shadow

QUILT DESIGNED BY *AGF studio*

OBSEVER

FABRICS DESIGNED BY *april rhodes*

SHARD



OBR-49800
INDIGO WINDOW CRYSTAL



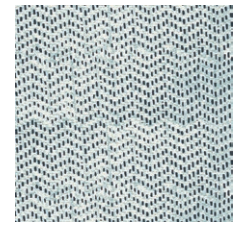
OBR-49801
AERIAL VIEW WHISPER



OBR-49802
OVERSHOT HAZE



OBR-49803
TRIANGLE TOKENS INK



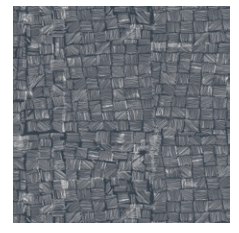
OBR-49804
TREADLE TRADITION



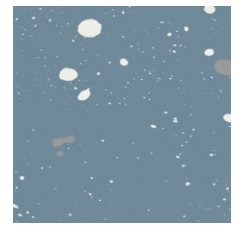
OBR-49805
HOMESPUN PRAXIS



OBR-49806
STONE WASH CLOUDY



OBR-49807
MESH WITH ME MOM

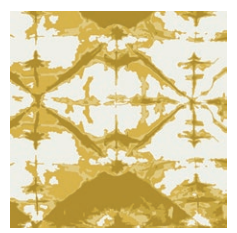


OBR-49808
SPECK STARDUST

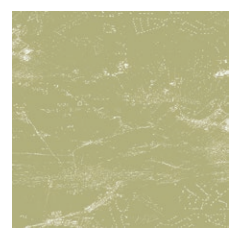


OBR-49809
CHIPPING AWAY DEPTH

PARTICLE



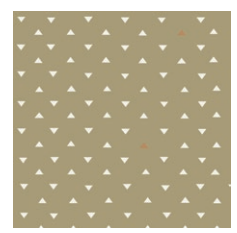
OBR-59800
INDIGO WINDOW SULPHUR



OBR-59801
AERIAL VIEW SAGE



OBR-59802
OVERSHOT GOLD



OBR-59803
TRIANGLE TOKENS HOME



OBR-59804
TREADLE LACE



OBR-59805
HOMESPUN WILLOW



OBR-59806
STONE WASH GLAZE



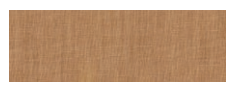
OBR-59807
MESH WITH ME OLIVE



OBR-59808
SPECK BRONZE



OBR-59809
CHIPPING AWAY MICA



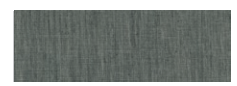
DEN-S-2006
ADOBE CLAY



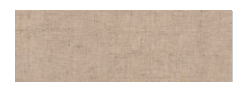
DEN-S-2007
NECTARINE SUNRISE



DEN-S-2003
AFTERNOON SAIL



DEN-S-2002
COOL FOLIAGE



DEN-L-4000
SOFT SAND



DEN-S-2005
FROSTED SAGE



DEN-S-2004
INFUSED HYDRANGEA



FABRIC REQUIREMENTS

Fabric A	OBR-49806	¼ yd.
Fabric B	OBR-49807	¾ yd.
Fabric C	OBR-49800	¾ yd.
Fabric D	OBR-49805	⅝ yd.
Fabric E	OBR-59807	1 yd.
Fabric F	OBR-59801	¾ yd.
Fabric G	OBR-59802	⅝ yd.
Fabric H	OBR-59809	⅝ yd.
Fabric I	OBR-49808	⅝ yd.
Fabric J	OBR-49803	½ yd.
Fabric K	OBR-59806	1 ¼ yd.
Fabric L	OBR-59803	⅝ yd.
Fabric M	OBR-59800	⅝ yd.
Fabric N	OBR-49802	⅝ yd.
Fabric O	DEN-S-2004	¾ yd.
Fabric P	DEN-S-2003	½ yd.
Fabric Q	DEN-S-2007	½ yd.
Fabric R	DEN-L-4000	½ yd.
Fabric S	DEN-S-2002	⅞ yd.
Fabric T	DEN-S-2005	½ yd.
Fabric U	DEN-S-2006	½ yd.

BACKING FABRIC

OBR-49808 - 5 yd. *(Suggested)*

BINDING FABRIC

DEN-S-2004- Fabric O-(Included)

CUTTING DIRECTIONS

¼" seam allowances are included.
WOF means width of fabric.

2 1/2" x 4 1/2" strips:

Sixteen (16) Fabric **A** and **B**
Thirty Two (32) Fabric **C,E,G,I**, and **L**
Forty Eight (48) Fabric **K**

9 3/4" Squares:

Four (4) Fabric **B,C,E,F,G,J,K**, and **L**

2 1/2" Squares :

Thirty Two (32) Fabric **B,E,F**, and **J**
Forty Eight (48) Fabric **O,R,T**, and **U**
Sixteen (16) Fabric **P,Q**, and **S**

4 1/2" Squares

Thirty Two (32) Fabric **D,H,M** and **N**

Half Square Construction

CONSTRUCTION

Sew all rights sides together with ¼" seam allowance.

- You will need to create thirty two (32) HST's from: B/C,F/G,J/K, and E/L. To create eight half square triangles with Fabric **B** and **C**, take a 9 3/4" square from both fabrics. **(Diagram 1)**



DIAGRAM 1

- Place right sides together. Draw two diagonal lines on the back of your squares to form an X. Sew on both sides of the diagonal lines at 1/4". **(Diagram 2)**

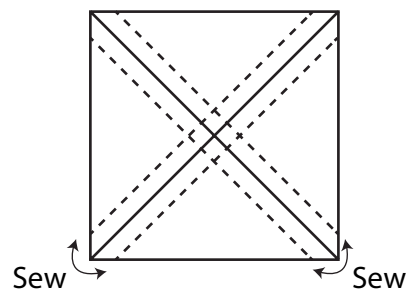


DIAGRAM 2

- Next cut squares vertically in half and horizontally in half. Then cut on both diagonal lines that you drew.
- You will now have 8 HST's. Repeat this process until you get 32 HST's from: **B/C,F/G,J/K**, and **E/L**.

Strip Unit Construction

- Place a 2 1/2" square right sides together to the end of a 2 1/2" x 4 1/2" strip and sew at the diagonal. Trim seam allowance to 1/4". Draw a diagonal line as reference on the wrong sides of your 2 1/2" squares. **(Diagram 3 and 4)**
- Make sure to watch fabric placement and orientation. Follow quilt illustration as a guide.

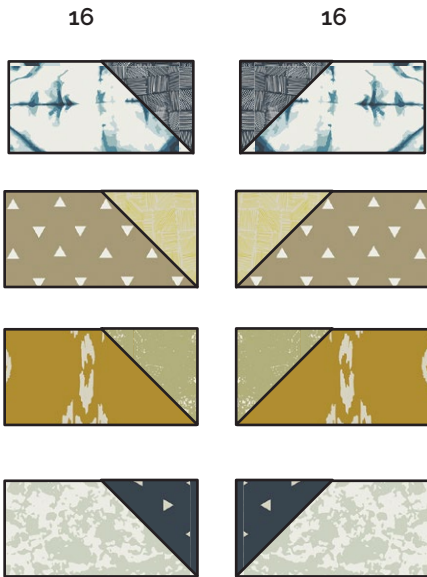


DIAGRAM 3

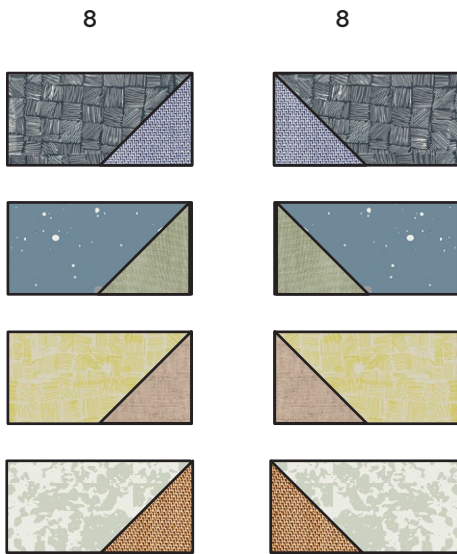
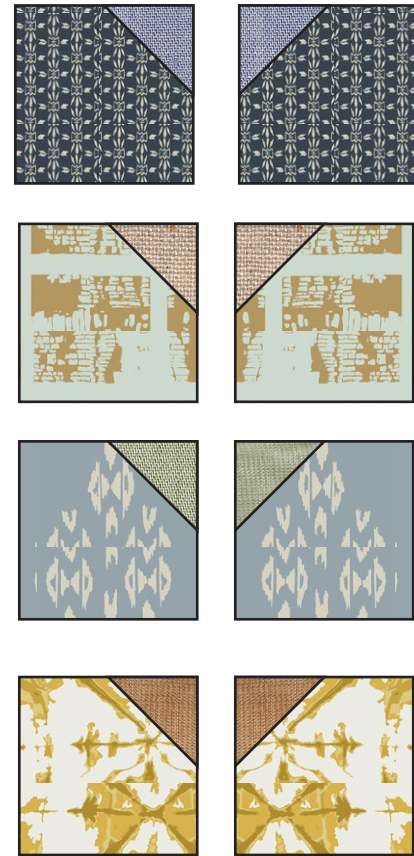


DIAGRAM 4

Block Unit Construction

- Take a 4 1/2" square and a 2 1/2" square. Place a 2 1/2" square at the corner of your 4 1/2" square right sides together and sew at the diagonal.
- Draw diagonal a line as reference on the wrong sides of your 2 1/2" squares. Repeat this process to get 32 of these blocks making sure to watch fabric placement and orientation. Sixteen of these blocks will be sewn with the diagonal going to the right and the other 16 will be towards the left. (Diagram 5)



16

16

DIAGRAM 5

Assembling the Block

CONSTRUCTION

- This quilt consists of one block made 16 times in different fabric combinations.
- You will need four of each block.

Block A



Block B



Block C



Block D



DIAGRAM 6

- Sew a 2 1/2" x 4 1/2" strip from Fabric **A** to a **B/C** HST to a **D/O** block unit to another **D/O** block unit to a **B/C** HST to a 2 1/2" x 4 1/2" strip from **A**. Follow Diagram 7.



DIAGRAM 7

- Next sew a **B/C** strip unit to a **D/O** block unit.
- Sew a 2 1/2" square from Fabric **P** to a **B/C** strip unit.
- Next sew together following Diagram 8.

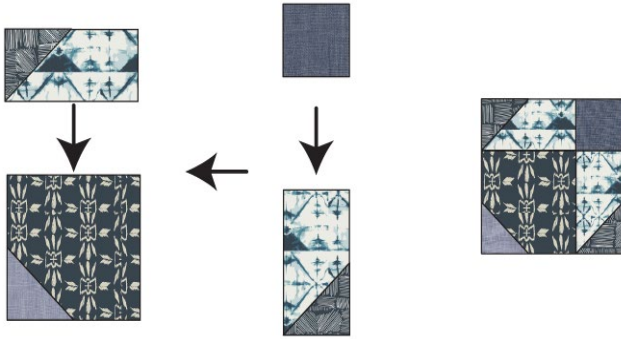


DIAGRAM 8

- Now sew a **B/C** HST to a **B/O** strip unit. (Diagram 9)

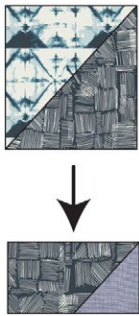


DIAGRAM 9

- Sew the piece you made in Diagram 8 to the piece made in Diagram 9.
- Repeat steps in Diagram 8-9 making a mirror image of the piece you just created. (Diagram 10)

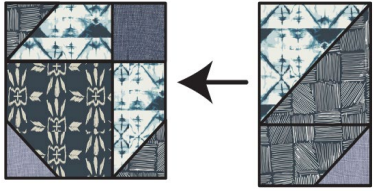


DIAGRAM 10

- Sew both pieces made in Diagram 10 together.
- To the top of this piece sew the piece you constructed in Diagram 7. (Diagram 11)
- You have completed the top half of your block. To make the bottom part of your block, repeat steps in Diagram 7-10 making a mirror image of the top of your block. Then sew pieces together.

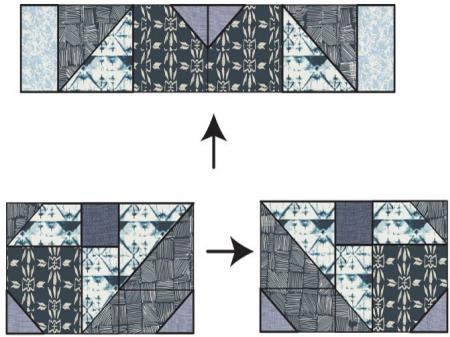


DIAGRAM 11

ASSEMBLING THE TOP

Sew all rights sides together with 1/4" seam allowance. Press open.

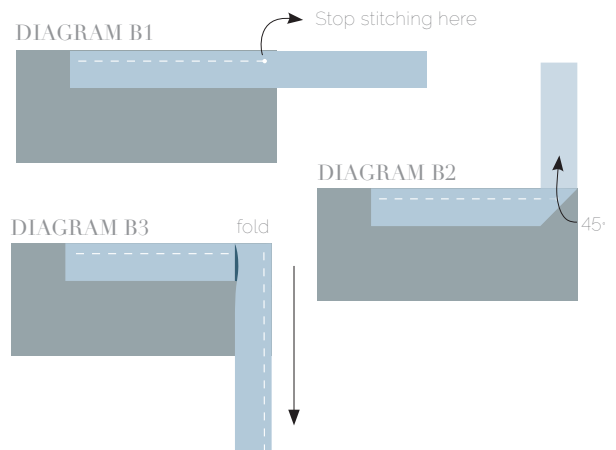
- Arrange blocks in four rows of four blocks each.
- Refer to cover picture for block placement.
- Sew blocks in each row together then sew rows together.

QUILT ASSEMBLY

Sew rights sides together.

- Place BACKING FABRIC on a large surface wrong side up. Stretch it with masking tape against that surface.
- Place BATTING on top of backing fabric.
- Place TOP on top of the batting with right side facing up. Smooth away wrinkles using your hands.
- Pin all layers together and baste with basting thread, using long stitches. You can also use safety pins to join the layers.
- Machine or hand quilt starting at the center and working towards the corners. Remember that quilting motifs are a matter of personal preference. Have fun choosing yours!
- After you finished, trim excess of any fabric or batting, squaring the quilt to proceed to bind it.

- Stop stitching before you reach the last 5 or 6 inches. Cut the threads and remove the quilt from under the machine presser foot. Lay the loose ends of the binding flat along the quilt edge, folding the ends back on themselves where they meet. Press them together to form a crease. Using this crease as the stitching line, sew the two open ends of the binding with right sides together (you can help yourself marking with a pencil if the crease is difficult to see).
- Trim seam to ¼" and press open. Complete the sewing. Turn binding to back of the quilt, turn raw edge inside and stitch by hand using blind stitch.



BINDING

Sew rights sides together.

- Cut enough strips 1½" wide by the width of the fabric to make a final strip 330" long. Start sewing the binding strip in the middle of one of the sides of the quilt, placing the strip right side down and leaving an approximated 5" tail. Sew with ¼" seam allowance (using straight stitch), aligning the strip's raw edge with the quilt top's raw edge.
- Stop stitching ¼" before the edge of the quilt (**DIAGRAM B 1**). Clip the threads. Remove the quilt from under the machine presser foot. Fold the strip in a motion of 45° and upward, pressing with your fingers (**DIAGRAM B2**). Hold this fold with your finger, bring the strip down in line with the next edge, making a horizontal fold that aligns with the top edge of the quilt (**DIAGRAM B3**). Start sewing at ¼" of the border, stitching all the layers. Do the same in the four corners of the quilt.





XX

Congratulations
& enjoy

XX



artgalleryfabrics.com

NOTE: While all possible care has been taken to ensure the accuracy of this pattern, We are not responsible for printing errors or the way in which individual work varies. Please read instructions carefully before starting the construction of this quilt. If desired, wash and iron your fabrics before starting to cut.